

Tait & Peterson

Partners: Eric S Peterson LLB, Dip Lp
Martin Taylor BA (Hons) Oxon
Law Accountant: James Morris



Solicitors, Notaries
& Estate Agents



HOME | ABOUT US | SERVICES | PROPERTY | LINKS | CONTACT US | ABOUT SHETLAND

~ DA HAA, FUNZIE, FETLAR, ZE2 9DJ ~



With 112 ha. TENANTED CROFT

Attractively situated three bedroom detached dwellinghouse and tenanted croft located in peaceful area of the east coast of Fetlar. Amenities nearby include the local shop, Nursery, Primary School, Community Hall and Interpretive Centre. The property was once used as a self-catering holiday let and has great potential for further tourism development. A flock of Shetland sheep, two ponies, geese, ducks and chickens will be included in the sale.

View [DA HAA, FUNZIE,](#)
in a
larger map and get
directions

PRICE: Offers in the region of £150.000
ENTRY: By arrangement
VIEWING: Tel. 01957 733 353

ACCOMMODATION:- Porch/Conservatory, Kitchen, Living Room, Three Bedrooms, Bathroom & Back Porch/Store Room.
 A number of large outbuildings are also on the land.
 Also 112 ha. of Tenanted Croft



Interior



Front Porch

FRONT PORCH/CONSERVATORY (Approx. 2.42m x 2.7m); Enjoying beautiful views to the south-west over the pebble beach of Funzie; wooden floor



Hallway pic 1

ENTRANCE HALL (Approx. 1.23m wide); L-shaped and carpeted; small built in shelved linen cupboard; one electric storage heater; telephone point.



Hallway pic 2

LIVING ROOM (Approx. 4.95m x 3.5m); Large window facing south-west; wooden floor; original coal fire with over mantle; one electric storage heater; television, broadband and telephone point and four double sockets.

Exterior



Da Haa

GARDEN Substantial garden area mainly to the north-east of the property enclosed by a wooden fence/stone wall; Further garden area to the south-west of the property enclosed by a stone wall.



View from front

GARAGE/WORKSHOP (Approx. 4.5m x 9.5m); With complete fan driven forge, bench and anvil; Power, lighting and water supply.

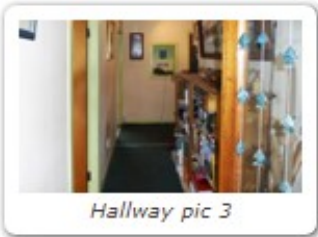


Outbuildings pic 1

LARGE SHED (Approx. 20m x 5.1m); Containing milking parlour with 10 stalls, power, lighting and water supply.



Outbuildings pic 2



Hallway pic 3



Living Room



Kitchen pic 1

KITCHEN (Approx. 3.3m x 4.91m); Large window facing south-east and one window facing north-west; spacious room with some built in units; Rayburn Regent oven; built in shelved cupboard which holds the immersion tank; built in larder; storage heater; cork tiled floor; leads off to:-



Kitchen pic 2

BACK PORCH (Approx. 1m x 1.5m); Cork tiled floor; fuse boxes; large storage cupboard with coat hooks and space for washing machine/fridge freezer etc.



Bathroom

BATHROOM (Approx. 1.93m x 2.33m); Small window facing north-east; three piece bathroom suite comprising bath, sink and toilet; vinyl flooring; tiled walls; heated towel rail.



Bedroom 1 pic 1

BEDROOM 1 (Approx. 3.17m x 3.09m); Large window facing south-west with undisturbed views out to Funzie; fitted carpet; small dimplex panel heater; built in cupboard with hanging rail; three double sockets.



18th Century Haa building

Other Features There is also a derelict croft house, a stone built chicken house and an 18th century two-storey Haa building which could be renovated. All these buildings are adjacent to the croft house.



Rear of property



General View

Known as the 'Garden of Shetland', Fetlar is a unique island with rich natural heritage and stunning scenic beauty. Renowned for being an ornithologist's paradise, the island has its very own RSPB reserve and boasts a wide variety of bird life including one of Britain's rarest breeding birds, the Red Necked Phalarope. Further photographs of Da Haa and the surrounding views can be found using the following links:

<http://www.fetlar.shetland.sch.uk/FetlarTourPage13.shtml>
and
<http://www.originart.eu/oa/frame.html> (click on Map Index)

The croft includes a Site of Special Scientific Interest at the Trona Mires. There is an agreement with the RSPB to preserve this area as a nesting site for rare birds for which there is an annual income. The majority of the land is described as herb rich coastal heathland and contains a wide diversity of flora. Geologically the site is of Funzie conglomerate, a feature unique to this area and of international importance.

Directions

Follow the A970 North bound from Lerwick, until you reach Voe, then turn

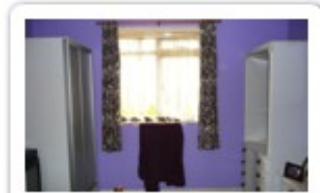


Bedroom 1 pic 2

BEDROOM 2 (Approx. 3.58m x 3.36m); Large window facing north-east and small window facing south-east; fitted carpet; small dimplex panel heater; built in cupboard with hanging rail and storage area; television point and two double sockets.



Bedroom 2 pic 1



Bedroom 2 pic 2

BEDROOM 3 (Approx. 2.45m x 3.6m); Large window facing south-west; fitted carpet; small dimplex panel heater; built in cupboard with hanging rail and storage area; two double sockets.



Bedroom 3

ATTIC Partially floored attic extending the full length of the house with a window on each gable end.

right and follow the A968 to Toft where a 20 minute ferry service is in operation from the Mainland to Yell. Once in Yell (Ulsta ferry terminal) continue to follow the A968 North to the Gutcher ferry terminal. Fetlar is connected to an inter-island ferry service operating from Gutcher ferry terminal either direct to Fetlar or via Unst. Once in Fetlar, follow the B9088 until you come to Funzie. Depending on ferry times, the journey from Lerwick will take approximately 2 ½ hours.

The ferry timetable is available at www.shetland.gov.uk/ferries



Details
(PDF)

While these contents and particulars described here are believed to be correct. They do not form part of any contract and are not warranted.

Property Email:
property@tait-peterson.co.uk

Tait & Peterson
Bank of Scotland Buildings
Lerwick, Shetland, ZE1 0EB

Tel: 01595-693010

General Email:
info@tait-peterson.co.uk

Copyright © 1997 - 2010 Tait & Peterson

Fax: 01595-695999